

## Postal Code 78703

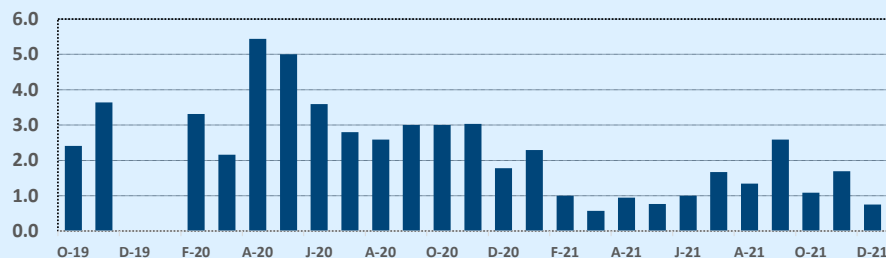
## Residential Statistics

Listings	This Month			Year-to-Date		
	Nov 2021	Nov 2020	Change	2021	2020	Change
Single Family Sales	15	31	-51.6%	192	242	-20.7%
Condo/TH Sales	13	14	-7.1%	191	102	+87.3%
<b>Total Sales</b>	<b>28</b>	<b>45</b>	<b>-37.8%</b>	<b>383</b>	<b>344</b>	<b>+11.3%</b>
New Homes Only	--	2	--	14	20	-30.0%
Resale Only	28	43	-34.9%	369	324	+13.9%
Sales Volume	\$44,720,500	\$58,615,976	-23.7%	\$461,069,240	\$409,970,888	+12.5%
New Listings	15	28	-46.4%	396	531	-25.4%
Pending	23	18	+27.8%	23	335	-93.1%
Withdrawn	2	8	-75.0%	54	106	-49.1%
Expired	--	--	--	--	--	--
Months of Inventory	0.8	1.8	-57.8%	N/A	N/A	--

Average	This Month			Year-to-Date		
	Nov 2021	Nov 2020	Change	2021	2020	Change
List Price	\$1,648,143	\$1,347,809	+22.3%	\$1,194,031	\$1,241,775	-3.8%
List Price/SqFt	\$690	\$563	+22.6%	\$591	\$522	+13.3%
Sold Price	\$1,597,161	\$1,302,577	+22.6%	\$1,203,836	\$1,191,776	+1.0%
Sold Price/SqFt	\$673	\$545	+23.6%	\$599	\$506	+18.5%
Sold Price / Orig LP	95.3%	93.4%	+2.0%	99.9%	94.5%	+5.7%
Days on Market	49	57	-14.3%	41	47	-11.8%

Median	This Month			Year-to-Date		
	Nov 2021	Nov 2020	Change	2021	2020	Change
List Price	\$1,332,500	\$1,100,000	+21.1%	\$999,000	\$995,000	+0.4%
List Price/SqFt	\$645	\$555	+16.1%	\$575	\$499	+15.3%
Sold Price	\$1,231,250	\$1,000,000	+23.1%	\$1,010,000	\$975,000	+3.6%
Sold Price/SqFt	\$635	\$523	+21.4%	\$579	\$489	+18.4%
Sold Price / Orig LP	95.0%	95.0%	+0.0%	99.0%	96.0%	+3.1%
Days on Market	19	44	-58.0%	14	30	-53.3%

### Months of Inventory - Last Two Years

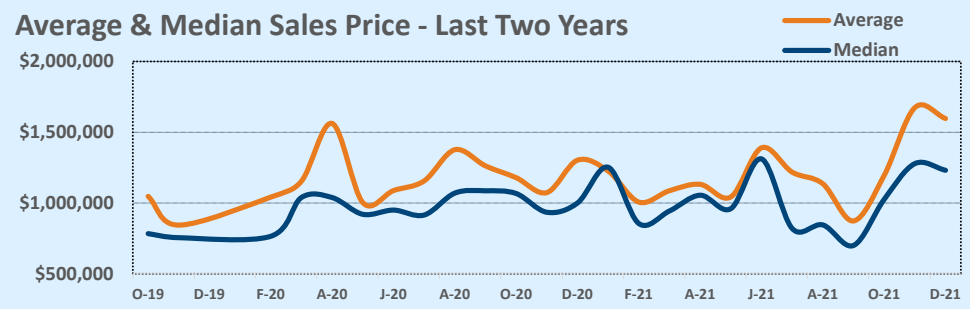


## Independence Title

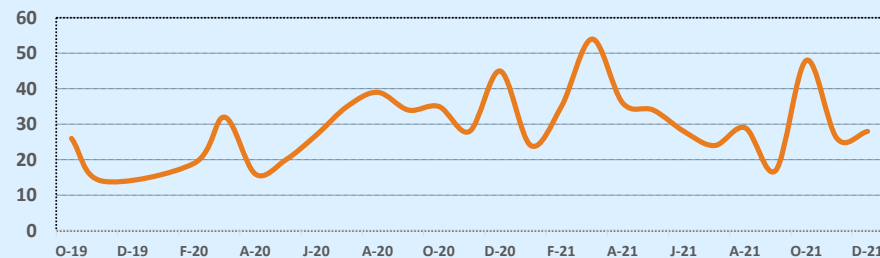
## November 2021

Price Range	This Month			Year-to-Date		
	New	Sales	DOM	New	Sales	DOM
\$149,999 or under	--	--	--	1	--	--
\$150,000- \$199,999	--	--	--	1	1	14
\$200,000- \$249,999	--	--	--	2	2	7
\$250,000- \$299,999	--	--	--	12	16	62
\$300,000- \$349,999	--	--	--	5	10	22
\$350,000- \$399,999	--	3	20	29	19	25
\$400,000- \$449,999	1	--	--	16	15	27
\$450,000- \$499,999	1	1	7	14	17	34
\$500,000- \$549,999	1	2	67	5	13	68
\$550,000- \$599,999	--	--	--	8	5	104
\$600,000- \$699,999	1	--	--	12	18	51
\$700,000- \$799,999	1	1	15	26	20	30
\$800,000- \$899,999	--	1	8	20	26	42
\$900,000- \$999,999	1	3	50	30	26	46
\$1M - \$1.99M	6	11	65	142	152	40
\$2M - \$2.99M	1	2	43	38	27	40
\$3M+	2	4	48	35	16	37
<b>Totals</b>	<b>15</b>	<b>28</b>	<b>49</b>	<b>396</b>	<b>383</b>	<b>41</b>

### Average & Median Sales Price - Last Two Years



### Number of Sales - Last Two Years



Based on information from the Austin Board of REALTORS® (alternatively, from ACTRIS). Neither the Board nor ACTRIS guarantees or is in any way responsible for its accuracy. The Austin Board of REALTORS®, ACTRIS and their affiliates provide the MLS and all content therein "AS IS" and without any warranty, express or implied. Data maintained by the Board or ACTRIS may not reflect all real estate activity in the market.